

# A Statistical Method of Accelerated Life Testing Based on Fuzzy Theory

Han Xu

Science & Technology on Reliability & Environmental Engineering Laboratory  
School of Reliability and Systems Engineering, Beihang University  
Beijing 100191, P.R. China  
xuhan1214@163.com

Xiao-Yang Li

Science & Technology on Reliability & Environmental Engineering Laboratory  
School of Reliability and Systems Engineering, Beihang University  
Beijing 100191, P.R. China  
leexy@buaa.edu.cn

Le Liu

Science & Technology on Reliability & Environmental Engineering Laboratory  
School of Reliability and Systems Engineering, Beihang University  
Beijing 100191, P.R. China  
liule@dse.buaa.edu.cn

**Abstract**—Failure data in accelerated life test are imprecise due to kind of subjectivity. This makes the assessment of testing lack of accuracy. A statistical model of accelerated life testing based on fuzzy theory is proposed in this paper. The model aims to describe the subjectivity of failure data and give a fuzzy interval assessment of lifetime and reliability comparing to the traditional point estimation. Firstly, triangular membership function is chosen to describe Type II censored data and their  $\alpha$ -level cut sets are settled under acceptable level. Then, the statistical modelling for ALT data is established based on fuzzy theory by integrating maximum likelihood estimation to determine the membership functions of parameters. And using Particle Swarm Optimization algorithm calculates their fuzzy evaluation values. Finally, the proposed method is verified by the simulation study.

**Keywords**- accelerated life testing; fuzzy theory; Particle Swarm Optimization; Maximum Likelihood Estimation; reliability.

## ACRONYM

|       |                               |
|-------|-------------------------------|
| ALT   | Accelerated Life Testing      |
| PSO   | Particle Swarm Optimization   |
| EA    | Evolutionary Algorithm        |
| MLE   | Maximum Likelihood Estimation |
| CSALT | constant-stress ALT           |
| SSALT | step-stress ALT               |
| PSALT | progressive-stress ALT        |

## NOTATION

|           |                                  |
|-----------|----------------------------------|
| $F(t)$    | Cumulative distribution function |
| $\lambda$ | Failure rate function            |
| $\theta$  | Mean life                        |
| $R(t)$    | Reliable distribution function   |

|       |   |
|-------|---|
| $S_i$ | Stress level ith                          |
| $T_i$ | Total testing time under stress $S_i$     |
| $r_i$ | Number of samples fail under stress $S_i$ |
| $k$   | Number of stress level                    |
| $n_i$ | Number of samples under stress $S_i$      |

## I. INTRODUCTION

Accelerated life testing is widely used for the life and reliability evaluation of high-reliability and long-life products as traditional life testing is hard to efficiently accomplish the tasks. Accelerated life testing(ALT) contains three kinds of testing: constant-stress ALT(CSALT), step-stress ALT(SSALT) and progressive-stress ALT(PSALT). Current statistical methods of those ALT can be divided into Bayesian statistical analysis and classical statistical methods which contains maximum likelihood estimation(MLE), least square estimation, linear estimations based on order statistics and so on. These methods require failure data analysis.

In ALT, periodic inspection is always conducted to monitor the product performance, obtaining the failure time data. However, the failure time cannot be accurate since it may happen at the adjacent inspection interval. As a result the failure time of samples is not precise because of being recorded subjectively. Thus, there exists big uncertainty in failure time data if the interval is quite long. When the ALT data is extrapolated to normal conditions, the uncertainty will also transfer and affect the accuracy of evaluation results, lacking of credibility.

Fuzzy theory is one of the important methods dealing with uncertainty. It has been widely studied by international researchers. Viertl<sup>[1-2]</sup> considers reliability of the system based

on Bayesian theory when the lifetime data are fuzzy. Hong-Zhong Huang studies the similar case<sup>[3]</sup> and also proposes a reliability model on competitive failure processes under fuzzy degradation data<sup>[4]</sup>. Jamkhaneh<sup>[5-6]</sup> particularly describes three kinds of lifetime distribution: Binomial distribution, Exponential distribution and Weibull distribution when the parameters of the distributions are fuzzy. The reliability of the system with fuzzy parameters is investigated. Lin<sup>[7]</sup> provides a membership function of the characteristic of a repairable system with fuzzy parameters of Exponential lifetime distribution.

In this paper, a statistical method for constant-stress ALT with Type II censored data based on fuzzy theory is proposed. The lifetime distribution of products follows exponential distribution. Maximum likelihood estimation is used for data statistics.

## II. ACCELERATED LIFE TESTING ANF FUZZY THEORY

### A. The statistical model of accelerated life testing

A statistical model of some product with exponential lifetime distribution is presented in this paper. The statistical inference of ALT bases on two assumptions. Firstly, the lifetime distribution of the product will always be exponential distribution under the normal stress level and accelerated stress levels. It can be expressed as

$$F_i(t) = 1 - \exp(-t / \theta_i) \quad (1)$$

$t > 0; i = 0, 1, \dots, k$

In the Eq.(1),  $\theta_i$  represents the mean life of the product under the stress level  $S_i$ . Secondly, the relationship between the mean life  $\theta_i$  and accelerated stress level  $S_i$ , also known as the accelerated model, is

$$\ln \theta_i = a + b\varphi(S_i) \quad (2)$$

Where  $a$  and  $b$  are parameters to be estimated.  $\varphi(S_i)$  is a function of stress  $S_i$  depending on the accelerated model.

In this paper, we choose the CSALT as an example owing to its universality in engineering. In CSALT, assuming there are  $n$  samples working at constant but different stress levels. Presuming an ALT has  $k$  accelerated stress levels, denoted as  $S_1 < S_2 < \dots < S_k$ , normal stress level is  $S_0$ . At each accelerated stress level  $S_i$ ,  $n_i$  specimens are run to failure until  $r_i$  specimens failed. The failure time data are called Type II censored data. Mark failure times of  $j$ th sample under its accelerated stress as  $t_{ij}$ ,  $i=1, 2, \dots, k$ ,  $j=1, 2, \dots, n_i$ . The total testing time of accelerated stress level  $S_i$  is

$$T_i = \sum_{j=1}^{r_i} t_{ij} + (n_i - r_i)t_{ir_i} \quad (3)$$

Then the mean time  $\theta_i$  of samples under stress level  $S_i$  can be calculated as

$$\theta_i = T_i / r_i \quad (4)$$

And the likelihood function under stress level  $S_i$  is

$$f = \lambda_i^{r_i} \exp(-\lambda_i T_i) \quad (5)$$

Then the likelihood function of the total accelerated life testing is

$$L = \left( \prod_{i=1}^k \lambda_i^{r_i} \right) \exp\left(-\sum_{i=1}^k \lambda_i T_i\right) \quad (6)$$

Combine Eq.(2) and Eq.(7), we can get

$$\ln L(a, b) = -a \sum_{i=1}^k r_i - b \sum_{i=1}^k \varphi(S_i) r_i - \sum_{i=1}^k T_i e^{-(a+b\varphi(S_i))} \quad (7)$$

After some deductions of Eq.(7), Eq.(8) is obtained as follows.

$$a = -\ln\left(\sum_{i=1}^k r_i\right) + \ln\left[\sum_{i=1}^k T_i \exp(-b\varphi(S_i))\right] \quad (8)$$

$$\left(\sum_{i=1}^k r_i\right) \left[\sum_{i=1}^k T_i \varphi(S_i) \exp(-b\varphi(S_i))\right] = \left(\sum_{i=1}^k \varphi(S_i) r_i\right) \left[\sum_{i=1}^k T_i \exp(-b\varphi(S_i))\right]$$

Traditionally, Newton Raphson iteration method is used to solve Eq.(8) and obtain the result of parameter  $a$  and  $b$ . Put  $a$  and  $S_0$  into Eq.(2). The mean life  $\theta_0$  under normal stress will be achieved.

### B. Fuzzy theory

Fuzzy theory was proposed by Lotfi A. Zadeh in 1965s<sup>[8]</sup> and soon becomes one of the most important theories dealing with uncertainty. In this paper we just introduce some necessary concepts we will use.

A fuzzy number  $\tilde{x}$  is characterized by a so-called characterizing function  $\mu(\cdot)$  which denotes the degree of membership of element  $\tilde{x}$  of the universe  $X$ .

$$\tilde{x} : X \rightarrow 0 : 1$$

$$\mu_{\tilde{x}}(X) \in [0, 1] \quad (9)$$

An  $\alpha$ -cut of  $\tilde{x}$ , written as  $\tilde{x}_\alpha$ , is defined as

$$\tilde{x}_\alpha = \{x \mid \mu_{\tilde{x}}(X) \geq \alpha\}$$

$$0 \leq \alpha \leq 1 \quad (10)$$

To a certain  $\alpha$ -cut of  $\tilde{x}$ , the fuzzy number  $\tilde{x}$  can be written as a finite closed interval as Eq.(11).

$$\tilde{x}_\alpha \in [\tilde{x}_\alpha^L, \tilde{x}_\alpha^U] \quad (11)$$

## III. THE OPTIMIZATION MODEL OF ALT BASED ON FUZZY THEORY

### A. Statistical model of ALT based on fuzzy theory

As discussed in the first part, Type II censored failure data in ALT are suspected because of subjectivity. The failure of samples happens at the adjacent inspection interval but the exact timing cannot be detected. Therefore, based on fuzzy theory, symmetric triangular membership function is chosen to describe the degree of recorded failure time of the exact failure

timing. In this paper, failure time will be written together with its membership function as

$$\tilde{t}_{ij} = (m_{t_{ij}}, g_{t_{ij}}) (i = 1, 2, \dots, k; j = 1, 2, \dots, r_i)$$

$$\mu_{\tilde{t}_{ij}}(t_{ij}) = \begin{cases} 1 - \frac{|t_{ij} - m_{t_{ij}}|}{g_{t_{ij}}} & m_{t_{ij}} - g_{t_{ij}} \leq t_{ij} < m_{t_{ij}} + g_{t_{ij}} \\ 0 & \text{else} \end{cases} \quad (12)$$

Where  $m_{t_{ij}}$  represents the center value of  $\tilde{t}_{ij}$  and  $g_{t_{ij}}$  represents the spread width. The value of  $g_{t_{ij}}$  is greater than or equal to zero and in this paper it cannot bigger than the inspection interval. The inspection interval varies under different stress levels.

Hence, according to the fuzzy algorithm, the total testing time of accelerated stress level  $S_i$  will be changed into

$$\tilde{T}_i = \sum_{j=1}^{r_i} \tilde{t}_{ij} = \left( \sum_{j=1}^{r_i} m_{t_{ij}}, \sum_{j=1}^{r_i} g_{t_{ij}} \right) + \left( (n_i - r_i) m_{t_{i_n}}, |(n_i - r_i) g_{t_{i_n}}| \right)$$

$$= \left( \sum_{j=1}^{r_i} m_{t_{ij}} + (n_i - r_i) m_{t_{i_n}}, \sum_{j=1}^{r_i} g_{t_{ij}} + (n_i - r_i) g_{t_{i_n}} \right) \quad (13)$$

$i = 1, 2, \dots, k$

$\tilde{T}_i$  is also a symmetric triangular fuzzy number on the basis of its form. Given a  $\alpha$ -cut level,  $\tilde{T}_i$  can also be written as

$$(\tilde{T}_i)_\alpha \in \left[ (\tilde{T}_i)_\alpha^L, (\tilde{T}_i)_\alpha^U \right] \quad (14)$$

As a result, the Eq.(8) changes into

$$\tilde{a}_\alpha = -\ln \left( \sum_{i=1}^k r_i \right) + \ln \left[ \sum_{i=1}^k (\tilde{T}_i)_\alpha \exp(-\tilde{b}_\alpha \Phi_i) \right] \quad (15)$$

$$\left( \sum_{i=1}^k r_i \right) \left[ \sum_{i=1}^k (\tilde{T}_i)_\alpha \Phi_i \exp(-\tilde{b}_\alpha \Phi_i) \right] = \left( \sum_{i=1}^k \Phi_i r_i \right) \left[ \sum_{i=1}^k (\tilde{T}_i)_\alpha \exp(-\tilde{b}_\alpha \Phi_i) \right]$$

According to the Eq.(15) and fuzzy algorithm,  $\tilde{a}$  and  $\tilde{b}$  are no longer symmetric triangular fuzzy numbers. The form of their membership function is hard to describe. So Particle Swarm Optimization(PSO) is chosen to ascertain the range of parameter  $a$  and  $b$ .

### B. Model optimization of ALT based on PSO

Particle Swarm Optimization(PSO) is kind of Evolutionary Algorithm. It derives from birds foraging behaviors. Its core concept is that using times of iteration to find the optimal value when given a random initial value. Details will be discussed combing with the figure as below. Fig.1 shows how to optimize the ALT statistical model based on PSO.

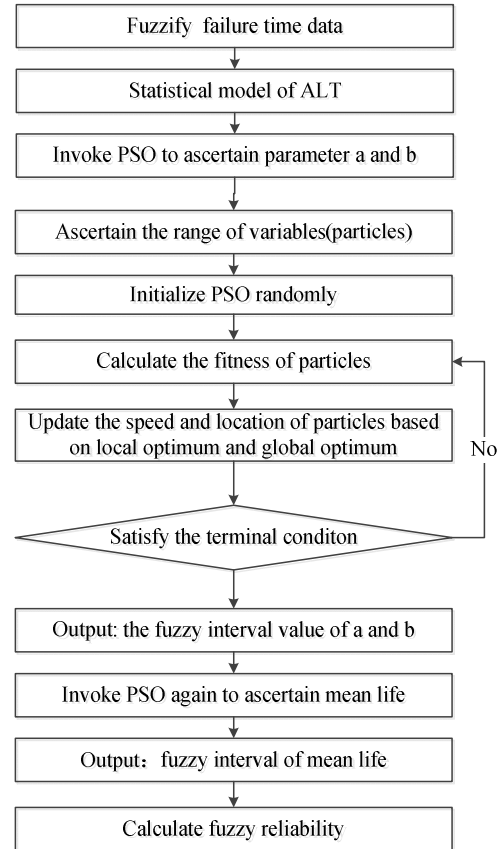


Figure 1. Optimize statistical model of ALT based on PSO

The final results of  $\tilde{a}$  and  $\tilde{b}$  vary When  $\tilde{T}_i$  changes within its fuzzy interval according to Eq.(15). By using PSO, the value of  $\tilde{a}$  and  $\tilde{b}$  is calculated as follows.

$$\tilde{a}_\alpha^L = \min \{ G(\tilde{a}, \tilde{b}) = 0 : \tilde{T} \in C_\alpha(\tilde{T}) \} \quad (16)$$

$$\tilde{b}_\alpha^L = \min \{ G(\tilde{a}, \tilde{b}) = 0 : \tilde{T} \in C_\alpha(\tilde{T}) \}$$

and

$$\tilde{a}_\alpha^U = \max \{ G(\tilde{a}, \tilde{b}) = 0 : \tilde{T} \in C_\alpha(\tilde{T}) \} \quad (17)$$

$$\tilde{b}_\alpha^U = \max \{ G(\tilde{a}, \tilde{b}) = 0 : \tilde{T} \in C_\alpha(\tilde{T}) \}$$

Where

$$C_\alpha(\tilde{T}) = \left[ (\tilde{T}_i)_\alpha^L, (\tilde{T}_i)_\alpha^U \right] \quad (18)$$

$$\{ G(\tilde{a}, \tilde{b}) = 0 \} \triangleq \text{Eq.(15)}$$

The degree of maximum and minimum value of  $\tilde{a}$  and  $\tilde{b}$  equals to  $\alpha$  which means<sup>[9]</sup>

$$\mu_{\tilde{a}}(\tilde{a}_\alpha^L) = \mu_{\tilde{a}}(\tilde{a}_\alpha^U) = \alpha \quad (19)$$

$$\mu_{\tilde{b}}(\tilde{b}_\alpha^L) = \mu_{\tilde{b}}(\tilde{b}_\alpha^U) = \alpha$$

Fuzzy mean life  $\tilde{\theta}_0$  under normal stress level  $S_0$  then will be given through Eq.(20) by invoking PSO a second time .

$$\tilde{\theta}_0 = \exp(\tilde{a} + \tilde{b} \ln(S_0)) \quad (20)$$

And fuzzy reliable distribution function is easily presented as Eq.(21) which shows the reliability of the specimen is an interval value given a certain timing point  $t$ .

$$\tilde{R}_0 = \exp(t / \tilde{\theta}_0) \quad (21)$$

#### IV. CASE STUDY

Data from [10] are used to illustrate the model. Four accelerated stress level are settled to assess the reliability of some product. The rated voltage of the product is 10Vol. Specific settings of the ALT are as below.

TABLE I. TEST CONDITION

| Test condition and number of results | Failure time of samples(unit: hour)   |
|--------------------------------------|---|
| $S_1=15v, n_1=30, r_1=10$            | 43, 547, 628, 697, 917, 2245, 2997, 3001, 3123, 3820                                      |
| $S_2=18v, n_2=30, r_2=10$            | 50, 254, 342, 535, 818, 1044, 1318, 1531, 1671, 2025                                      |
| $S_3=25v, n_3=20, r_3=15$            | 56, 85, 145, 176, 423, 439, 498, 735, 763, 833, 890, 987, 1105, 1391, 1547                |
| $S_4=35v, n_4=20, r_4=20$            | 11, 35, 42, 49, 51, 55, 65, 89, 98, 100, 113, 120, 123, 133, 133, 158, 171, 208, 219, 734 |

As discussed above, the data obtained from the ALT are not precise. Based on fuzzy theory, the center value of fuzzy failure time is the timing point recorded. The spread width varies because the inspection interval varies under different stress levels. The exact inspection interval of this ALT is not provided so take such settings just for an example:  $g_{S1}=24, g_{S2}=12, g_{S3}=5, g_{S4}=1$ . Then the total testing time under accelerated stress level can be expressed as below:

$$\begin{aligned} \tilde{T}_1 &= (94618, 240), \tilde{T}_2 = (50088, 120) \\ \tilde{T}_3 &= (17808, 75), \tilde{T}_4 = (2707, 20) \end{aligned} \quad (22)$$

The final results are shown when given two  $\alpha$ -cult level according to Eq.(16)-Eq.(21).

$$\begin{aligned} \alpha &= 0.3, \\ \tilde{a}_{0.3} &\in [23.1639, 23.2281] \\ \tilde{b}_{0.3} &\in [-5.1008, -5.0827] \\ \tilde{\theta}_{0.3} &\in [91024, 101190] \\ \exp(-t / 91024) &\leq \tilde{R}_{0.3}(t) \leq \exp(-t / 101190) \end{aligned} \quad (23)$$

and

$$\begin{aligned} \alpha &= 0.6, \\ \tilde{a}_{0.6} &\in [23.1774, 23.2143] \\ \tilde{b}_{0.6} &\in [-5.0969, -5.0865] \\ \tilde{\theta}_{0.6} &\in [93093, 98933] \\ \exp(-t / 93093) &\leq \tilde{R}_{0.6}(t) \leq \exp(-t / 98933) \end{aligned} \quad (24)$$

The failure time data are precise when  $\alpha=1$ . It is just a special type of fuzzy number. The mean life of the case study in [10] is 96020h, a traditional result after common inference. This paper's result shows that

$$\tilde{\theta}_{0.3}^L < \tilde{\theta}_{0.6}^L < 96020 < \tilde{\theta}_{0.6}^U < \tilde{\theta}_{0.3}^U \quad (25)$$

The smaller the  $\alpha$ -cut is, more imprecise the data are which lead to a bigger interval value of the mean life. Traditional results belong to the results of this paper.

#### V. CONCLUSIONS

A statistical model of ALT based on fuzzy theory is proposed in this paper for the first time. This model aims to solve the problem that the failure time data in ALT are not imprecise. Comparing to the traditional statistical inference which ends in the point estimation of reliability and lifetime, this approach analyzes the imprecision of data reasonably and obscures the failure data based on fuzzy theory. Combining with MLE and PSO, this approach finally provides an interval estimation. The lifetime of a product estimated by ALT cannot be so accurate that an interval assessment is more credible and reasonable.

#### ACKNOWLEDGMENT

My sincere thanks to my tutor Xiao-yang Li and my friend Le Liu for their help.

#### REFERENCES

- [1] Viertl R. On reliability estimation based on fuzzy lifetime data[J]. Journal of Statistical Planning and Inference, 2009, 139(5): 1750-1755.
- [2] Viertl R. Statistical methods for fuzzy data[M]. John Wiley & Sons, 2011.
- [3] Huang H Z, Zuo M J, Sun Z Q. Bayesian reliability analysis for fuzzy lifetime data[J]. Fuzzy Sets and Systems, 2006, 157(12): 1674-1686.
- [4] Wang Z, Huang H Z, Du L. Reliability analysis on competitive failure processes under fuzzy degradation data[J]. Applied Soft Computing, 2011, 11(3): 2964-2973.
- [5] Jamkhaneh E B. An Evaluation of the Systems Reliability Using Fuzzy Lifetime Distribution[J]. Journal of Applied Mathematics, Islamic Azad University of Lahijan, 2011, 7(28): 73-80.
- [6] Jamkhaneh E B. Analyzing System Reliability Using Fuzzy Weibull Lifetime Distribution[J]. International Journal of Applied, 2014, 4(1): 93-102
- [7] Lin C H, Ke J C, Huang H I. Reliability-based measures for a system with an uncertain parameter environment[J]. International Journal of Systems Science, 2012, 43(6): 1146-1156.
- [8] Zadeh L A. Fuzzy sets[J]. Information and control, 1965, 8(3): 338-353.
- [9] Huang H Z, Zuo M J, Sun Z Q. Bayesian reliability analysis for fuzzy lifetime data[J]. Fuzzy Sets and Systems, 2006, 157(12): 1674-1686.
- [10] Mao S S, Huang L L. Accelerated Life Testing [M]. Science Press, 1997:43-44.